

INTERPRAEVENT 2023

International Symposium

國際天然災害防治研討會

參訪手冊
Field Trip

Contents

Trip Schedule	3
Workshop agenda.....	4
Map of Huisun experimental forest station	5
Huisun experimental forest station	6
1. Introduction of Huisun experimental forest station	6
2. Eco-Tour in Huisun experimental forest station – Route 1	7
4. Camellia trail(Tea trail)	9
5. Coffee shop.....	9
6. Souvenir shop	9
Dammed-lake Failure Experiment	10

Trip Schedule

April 19th, 2023 (Wed.)		
time	detail	location
8:50	Assemble in Hotel National Lobby	Hotel National (1 st floor lobby)
9:00~10:30	Hotel National→Huisun Experimental Forest Station Drive to Huisun Experimental Forest Station from Hotel National	-
10:30~12:00	Eco-Tour in Huisun Experimental Forest Station Route 1 & Route 2(Fig.4& Fig.5)	Gathering at the parking lot in front of souvenir shop
12:00~13:00	Lunch	Education Center
13:00~15:00	Workshop	International Conference Center
15:00~16:00	Dammed-lake Failure Experiment Drive to Huisun bridge 2 from International Conference Center	Gathering at International Conference Center
16:00~17:30	Huisun Experimental Forest Station→Hotel National Leave Huisun Experimental Forest Station	-

- Contact person :

Chi-Yao HUNG +886-912-582-513 cyhung@nchu.edu.tw

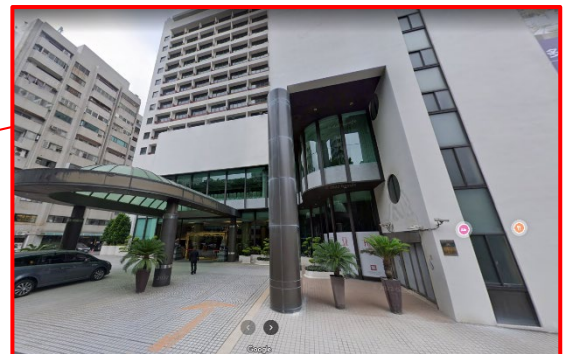


Fig. 1 map of National hotel(red dot is the assembling place)

Workshop agenda

place: International Conference Center

time	topic	speaker
13:15~13:25	惠蓀林場蘭島溪可調流量之潰壩實驗簡介 A Brief Introduction of Adjusted Discharge Dam Breach Experimental Station in Landao Creek, Hunsun Forest	陳樹群 Su-Chin CHEN
13:25~13:40	原尺寸溢頂潰壩之高精度同步量測實驗 Precise Synchronous Measurement of Dam Breach Deformed Process at Field Scale	洪啟耀 Chi-Yao HUNG
13:40~13:55	河川地震學於野外尺度監測之應用：限制與挑戰 Field-scale Application of Fluvial Seismology: Limitation and Challenge	趙韋安 Wei-An CHAO
13:55~14:10	以無人機光達進行潰壩試驗連續變形之模型重建評估 Evaluation of Model Reconstruction for Continuous Deformation of Dam Break Test Using UAV LiDAR	王國隆 Kuo-Lung WANG
14:10~14:30	Discussion	

Map of Huisun experimental forest station



Fig. 2 Map of Huisun experimental forest station

Huisun experimental forest station

1. Introduction of Huisun experimental forest station

The forest, 7,477 ha in area, is situated at Nantou county, Taiwan, approximately 35km to the east of Taichung city. It is the largest experimental forest among the 4 belonging to the National Chung Hsing University. Due to the 2000-meter altitude difference in Huisun, from 450-2,420 m, the forest is longitudinally scattered between peak and valley, and so the main features of the climate can be divided into tropical, subtropical and warm regions. Each region consists of a variety of vegetation with adaptive plants. The varieties of plants in the 3 regions is a result of the multi-variety ecological system.

As economic and industrial process continues in Taiwan, its citizens desire to enjoy a more natural, peaceful and harmonious environment on their vacations. To accommodate this desire, we planned a 1,597 ha. forestall recreation area in western Huisun and offer the tourists a chance to get close to mother nature.

The purpose of Huisun forest is to facilitate colleges and their students the conducting of their researches and experiments. The in-depth tour of the forest has been a must-do activity since the recreation area's establishment in 1982. All visitors must follow the scenery and environment protection standards by which we set up to preserve the nature and to prevent the forest from deterioration.

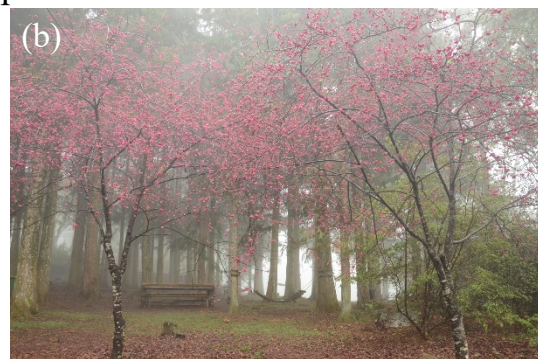
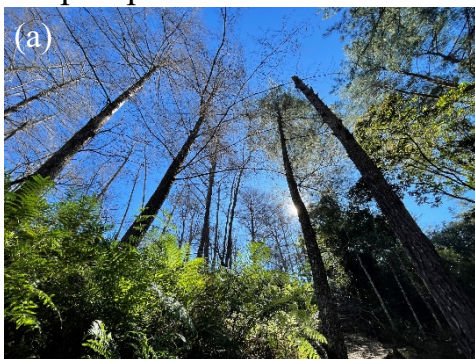


Fig. 3(a)forest (b)cherry blossoms(Source:blossoms<https://www.facebook.com/huisunforest/photos>)

2. Eco-Tour in Huisun experimental forest station – Route 1

Viewing Deck Trail → You-Sheng Mountain Forest Road → Coffee shop

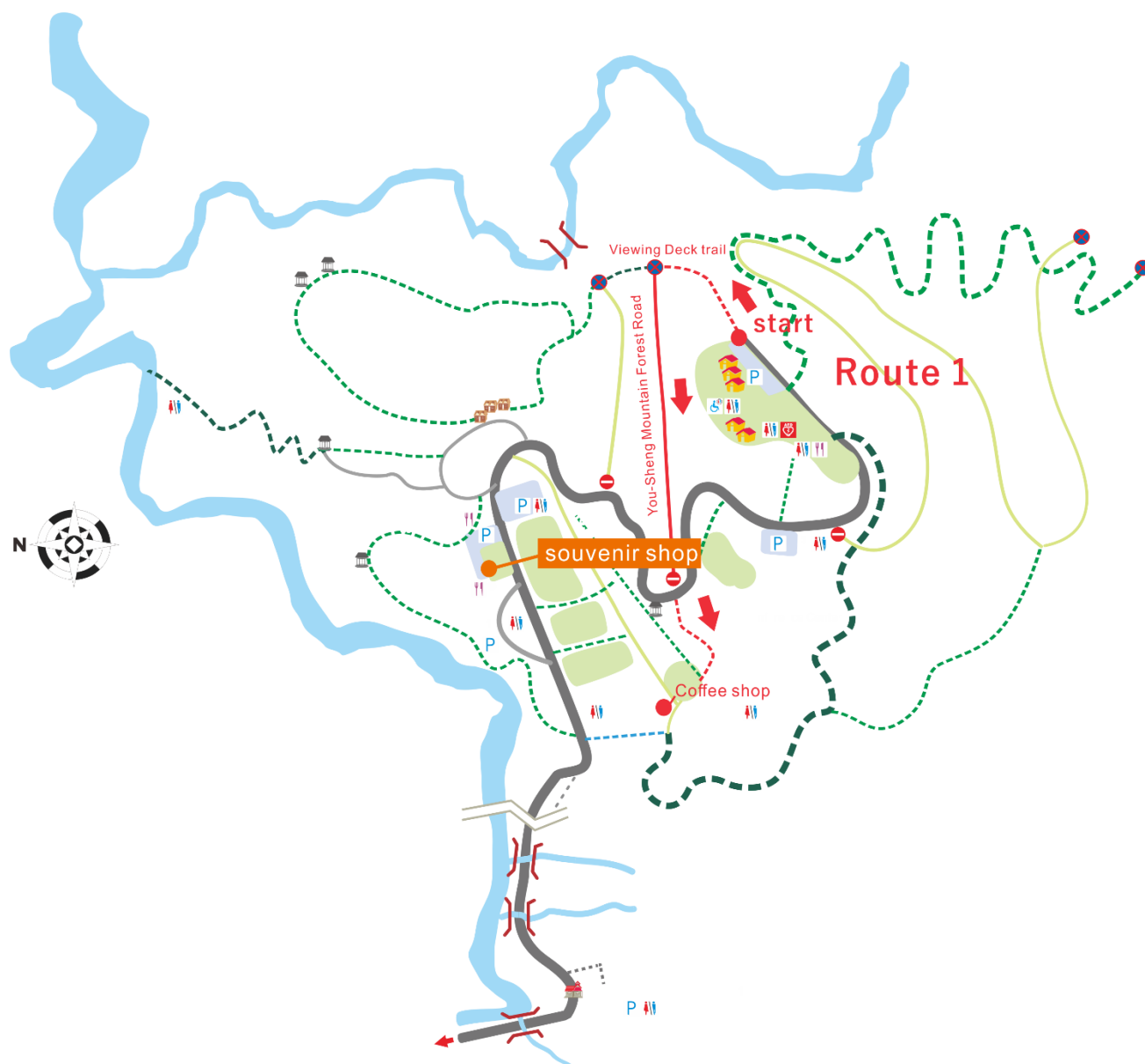


Fig. 4 Route 1 of Huisun experimental forest station

3. Eco-Tour in Huisun experimental forest station – Route 2

Tea trail → Herb garden → Fording trail → Coffee shop → 情人道 → parking lot in front of souvenir shop

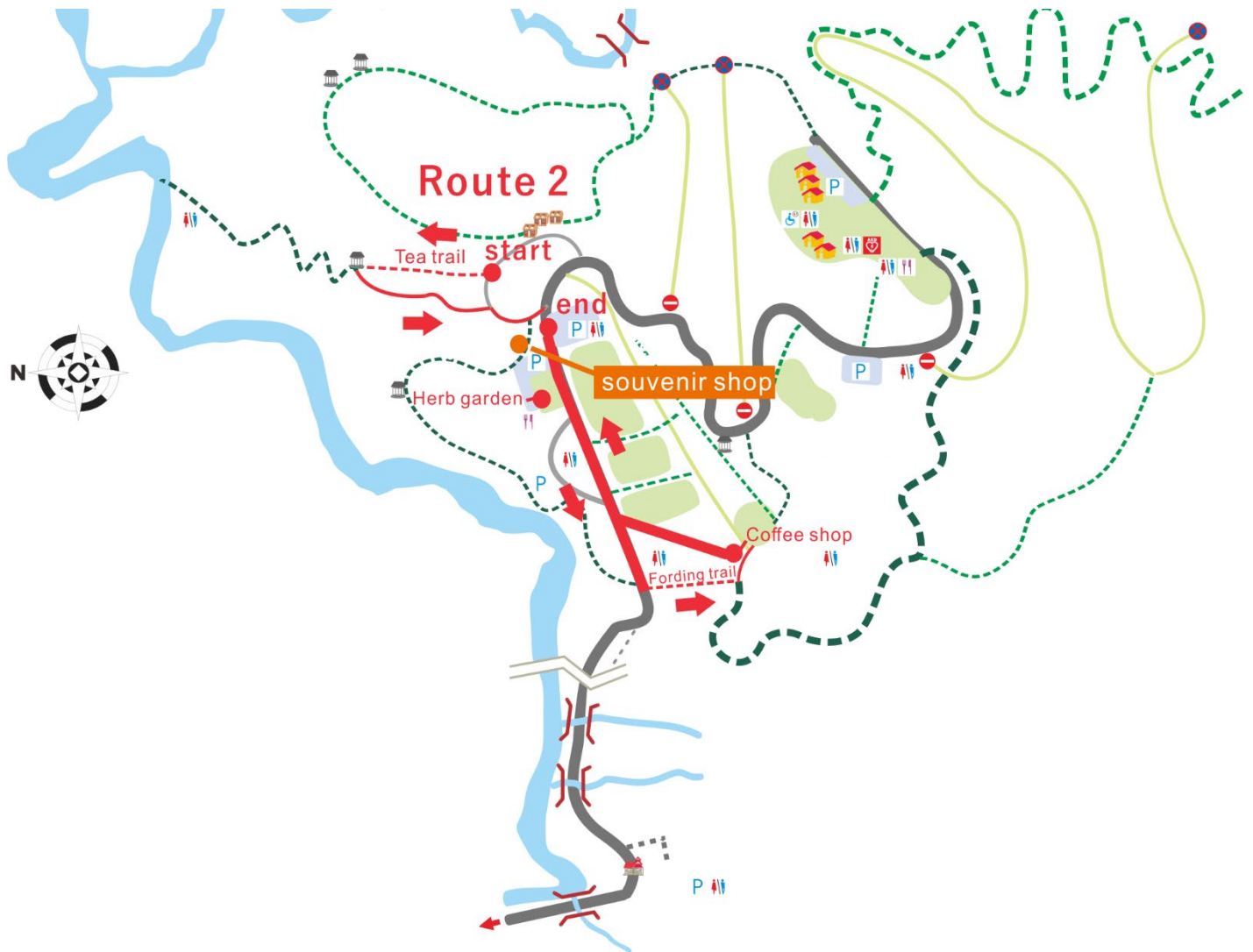


Fig.5 Route 2 of Huisun experimental forest station

4. Camellia trail(Tea trail)

Various kinds of tea and camellia are planted here. You can enjoy the Camellia flowers blomming in different colors and forms from November to April.



Fig.6 Tea trail

(Source: https://b.blog.xuite.net/b/6/a/6/239051651/blog_3833716/txt/452652368/12.jpg)

5. Coffee shop

Huisun Forest station was one of the earliest coffee tree test site in Taiwan. Most of the coffee tree planted on the island came from here. Visitors can enjoy a cup of pour-over coffee and light breeze from the nearby Metasequoia square.

6. Souvenir shop

The shop sells snacks, drinks, milk and ice cream produced at the fram of NCHU. Souvenirs printed with the logo of Huisun Forest can also be purchased here.

Dammed-lake Failure Experiment

How does the water flow of the dammed lake vary during the dam breach? Nobody knows. Because in the process of dam breaching, almost no one was on the scene. Therefore, we would very much like to reveal the puzzle through the experiment that how the disaster formed. How large is the submergence range caused by the breaching flow? And when does the peak discharge occur? In order to have a better understanding of the breaching process of barrier dam and the disasters characteristics caused by floods and sediments during the failure. Professor Su-Chin Chen from the Department of Soil and Water Conservation of National Chung Hsing University and his research team established the world's first full-scale barrier dam breach test site, restored the scene of the disaster in the Landao Creek, Huisun Forest Recreation Area.

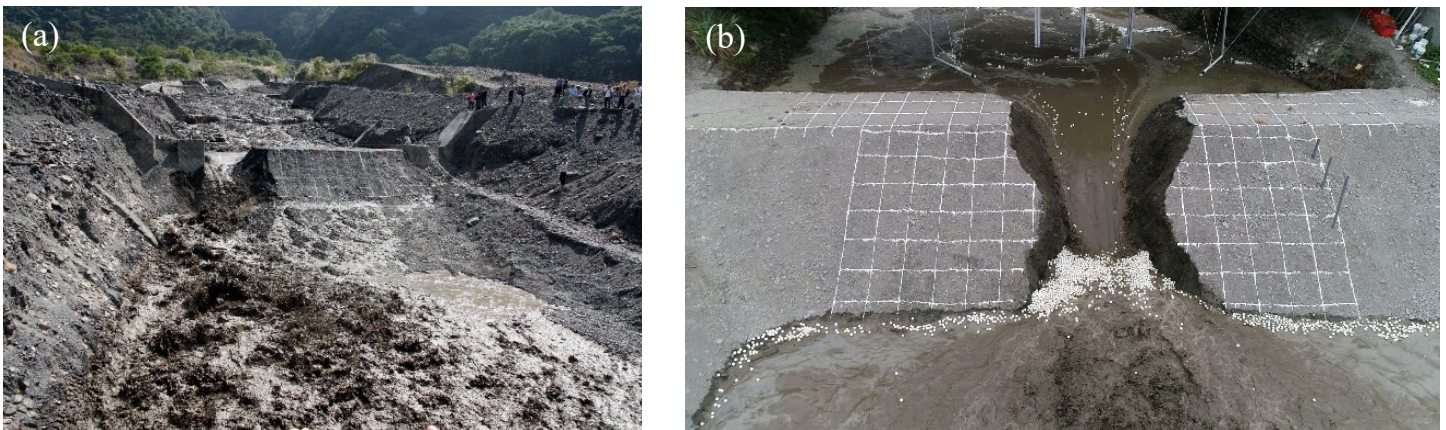


Fig. 5 (a)(b) dam breach experiment